



شركة الاستثمار الوطنية
NATIONAL INVESTMENTS COMPANY

Bursa Kuwait – Daily Market Report MENA Securities – Research & Studies Dep.

10th October 2022



www.nic.com.kw

DAILY MARKET COVERAGE REPORT

NIC MENA SECURITIES - RESEARCH AND STUDIES DEP



Kuwait Market Watch

Monday, October 10, 2022

Index	Close	DTD Chg Net	DTD (%)	YTD (%)	52W High	52W Low	MKT CAP Bn (KD)	PBV (X)	PE (X)	DY (%)
All Share Index	7,003.00	-177.54	-2.47%	-0.57%	8,472.15	6,788.83	44.77	1.99	30.47	4.01
Premier Index	7,831.09	-209.46	-2.61%	2.51%	9,437.37	7,343.90	35.95	2.19	31.32	4.41
Main Index	5,271.77	-103.68	-1.93%	-10.44%	6,600.62	5,190.37	8.82	1.17	27.00	2.42
NIC 50 Index	8,768.64	-236.29	-2.62%	2.89%	10,553.82	8,195.69	35.25	2.19	31.32	4.41

Index	Value Mn(KD)	Volume (Mn share)
All Share Index	78.11	166.99
Premier Index	72.09	106.54
Main Index	6.02	60.45
NIC 50 Index	76.01	141.80

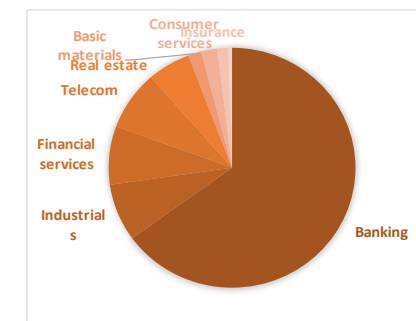
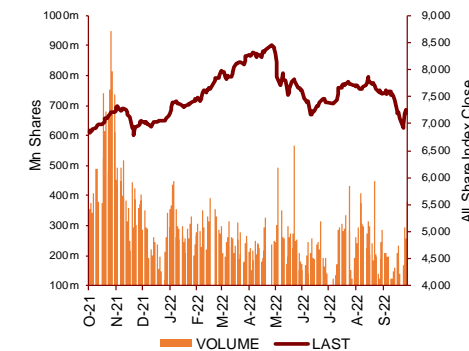
Today's Top 5 Gainer %	Close KD	Value KD	DTD (%)
Aqar Real Estate Investments	0.059	0.111	9.43%
Salbookh Trading	0.018	297	7.06%
Osoul Investment	0.073	6,743	5.65%
Al Masaken International Real	0.030	0.030	5.26%
Equipment Holding	0.033	3.260	5.16%

Today's Top 5 by Value	Close KD	Trade Val Mn(KD)	DTD (%)
Kuwait Finance House	0.775	55.31	-5.95%
Agility Public Warehousing	0.654	4.32	-3.40%
National Bank of Kuwait	1.020	3.46	-0.58%
Mobile Telecommunications	0.585	2.32	-0.85%
National Consumer Holding	0.106	0.95	-4.50%

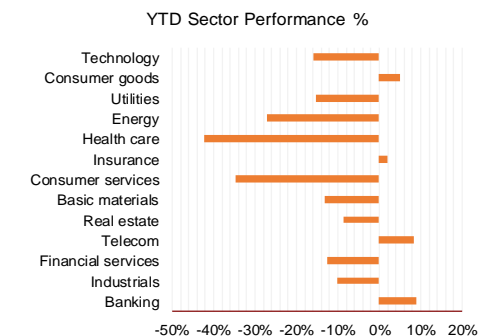
Market Breadth	UP	Down	No Chg
All Share Index	17	92	44
Premier Index	1	24	1
Main Index	16	68	43
NIC 50 Index	3	47	0

Today's Top 5 Loser %	Close KD	Value KD	DTD (%)
Kuwait Remal Real Estate	0.011	2,109	-12.80%
Jiyad Holding	0.024	93,556	-10.19%
Kuwait Financial Centre	0.103	52,666	-9.65%
Energy House Holding	0.019	4,079	-9.27%
National Mobile Telecomm	0.890	15,948	-8.53%

Top 5 by Volume	Close KD	Trade Vol Mn(Shrs)	DTD (%)
Kuwait Finance House	0.775	70.03	-5.95%
National Consumer Holding	0.106	8.83	-4.50%
GFH Financial Group	0.075	8.43	-4.34%
Agility Public Warehousing	0.654	6.54	-3.40%
National Real Estate	0.129	4.71	-6.52%

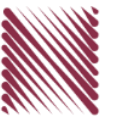


Sector	Close	DTD Chg Net	DTD (%)	YTD (%)	52W High	52W Low	MKT CAP Bn (KD)	PBV (X)	PE (X)	DY (%)
Banking	1,717.36	-48.930	-2.77%	8.8%	1,992.2	1,552.3	28.727	1.59	24.13	1.88
Industrials	998.88	-25.220	-2.46%	-10.3%	1,443.6	976.3	3.412	1.00	19.27	3.84
Financial services	1,209.68	-33.320	-2.68%	-12.7%	1,678.3	1,190.4	3.479	0.97	29.51	3.03
Telecom	1,157.81	-23.490	-1.99%	8.4%	1,514.7	1,055.9	3.543	1.31	13.33	2.91
Real estate	1,190.98	-22.140	-1.83%	-8.5%	1,438.0	1,155.8	2.488	0.69	35.55	1.37
Basic materials	871.56	-17.010	-1.91%	-13.3%	1,233.3	846.0	0.760	1.23	9.15	5.98
Consumer services	461.19	-16.480	-3.45%	-34.7%	792.7	449.8	0.939	2.30	27.53	1.74
Insurance	1,559.31	-2.570	-0.16%	1.9%	1,675.7	1,430.3	0.621	0.84	45.78	5.22
Health care	459.73	0.000	0.00%	-42.3%	821.7	420.4	0.228	15.73	12.57	0.96
Energy	1,039.11	-3.080	-0.30%	-27.0%	1,592.9	975.7	0.210	0.80	20.79	2.33
Utilities	500.00	-7.890	-1.55%	-15.4%	650.0	500.0	0.209	2.14	14.55	9.33
Consumer goods	1,417.89	13.220	0.94%	5.1%	1,641.0	1,126.8	0.140	0.92	37.50	2.08
Technology	567.45	-7.270	-1.26%	-16.0%	843.9	539.1	0.008	0.69	NM	-
	7,003.00	-177.54	-2.47%	-0.6%	8,472.2	6,788.8	44.77	1.99	30.47	4.01



DAILY MARKET COVERAGE REPORT

NIC MENA SECURITIES - RESEARCH AND STUDIES DEP



Premier Market

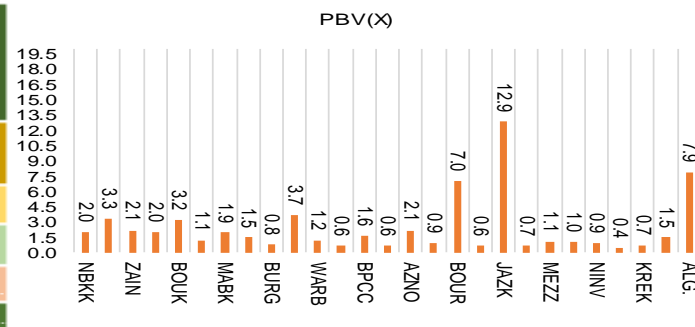
Monday, October 10, 2022

Premier Market	Price			Valuation Multiples			MKT Cap	Price Performance		Trading Indicators		ROE	ROA	52 Week (KD)		MKT Cap
	Close (KD)	Day Δ	Day % Δ	PBV(X)	PE(X)	DY%	Mn KD	MTD(%)	YTD (%)	Value (Mn KD)	(Mn Shrs)	(%)	(%)	High	Low	%
National Bank of Kuwait	1.020	-0.006	-0.58%	1.98	18.44	2.37	7,703	5%	7%	3.46	3.39	10.9%	1.4%	1.104	0.890	21.56%
Kuwait Finance House	0.775	-0.049	-5.95%	3.32	26.32	1.32	10,254	-8%	2%	55.31	70.03	12.8%	1.6%	1.039	0.720	28.70%
Mobile Telecommunications	0.585	-0.005	-0.85%	2.13	13.83	5.59	2,531	0%	-2%	2.32	3.96	15.6%	4.3%	0.698	0.564	7.08%
Ahli United Bank BSC	0.305	0.000	0.00%	2.04	17.93	2.72	3,400	0%	21%	0.00	0.00	11.3%	1.6%	0.336	0.240	9.52%
Boubyan Bank	0.797	-0.011	-1.36%	3.22	52.54	0.56	2,979	4%	12%	0.55	0.69	6.7%	0.8%	0.965	0.681	8.34%
Agility Public Warehousing	0.654	-0.023	-3.40%	1.12	50.23	2.46	1,652	-2%	-17%	4.32	6.54	2.7%	2.2%	1.062	0.634	4.62%
Mabane Co.	0.850	-0.014	-1.62%	1.94	17.98	1.53	1,055	-2%	14%	0.90	1.05	11.2%	5.4%	0.910	0.715	2.95%
Gulf Bank	0.312	-0.009	-2.80%	1.46	17.66	2.08	988	4%	17%	0.87	2.76	8.5%	0.8%	0.385	0.224	2.76%
Burgan Bank	0.214	-0.003	-1.38%	0.79	18.12	2.19	703	-4%	-10%	0.31	1.46	4.3%	0.7%	0.307	0.205	1.97%
Human Soft Holding	3.300	-0.070	-2.08%	3.65	7.63	11.87	401	1%	2%	0.18	0.06	48.7%	39.9%	3.704	3.006	1.12%
Warba Bank	0.222	-0.004	-1.77%	1.21	26.30	0.00	444	0%	-19%	0.65	2.94	4.8%	0.6%	0.298	0.216	1.24%
Qurain Petrochemical Industries	0.261	-0.008	-2.97%	0.64	9.98	6.69	280	-4%	-25%	0.13	0.49	6.4%	5.2%	0.403	0.255	0.78%
Boubyan Petrochemical	0.803	-0.009	-1.11%	1.64	9.08	7.39	419	-3%	-6%	0.11	0.14	19.1%	10.1%	1.125	0.769	1.17%
Kuwait Projects Company Holding	0.118	-0.005	-4.07%	0.62	302.56	4.07	289	-11%	-17%	0.10	0.88	0.2%	0.1%	0.215	0.118	0.81%
Shamal Az-Zour Al-Oula Power & Water	0.190	-0.003	-1.55%	2.14	14.55	9.33	209	-3%	-17%	0.06	0.30	19.1%	2.9%	0.247	0.189	0.58%
National Industries Group Holding	0.219	-0.008	-3.52%	0.92	5.04	4.89	472	-4%	-9%	0.82	3.73	15.2%	6.5%	0.314	0.202	1.32%
Boursa Kuwait Securities Co	2.029	-0.056	-2.69%	6.99	21.70	3.12	407	-2%	0%	0.15	0.07	33.9%	22.2%	2.870	1.800	1.14%
Kuwait International Bank	0.197	-0.003	-1.50%	0.62	31.32	1.92	209	-1%	-6%	0.13	0.64	1.9%	0.4%	0.259	0.192	0.58%
Jazeera Airways	1.778	0.068	3.98%	12.85	14.38	2.69	391	7%	38%	0.32	0.18	164.8%	12.1%	2.099	0.835	1.09%
Alafco Aviation Lease and Finance	0.175	-0.004	-2.23%	0.65	NM	0.00	167	1%	-20%	0.17	0.97	-15.9%	-3.4%	0.256	0.167	0.47%
Mezzan Holding	0.366	-0.012	-3.17%	1.07	37.50	4.15	114	-2%	-37%	0.28	0.76	2.8%	1.3%	0.632	0.358	0.32%
Gulf Cable and Electrical Industries	1.070	-0.020	-1.83%	0.99	9.92	5.50	223	0%	23%	0.13	0.13	11.0%	NM	1.850	0.829	0.62%
National Investments	0.228	-0.011	-4.60%	0.91	8.52	18.83	182	-1%	4%	0.19	0.84	10.9%	8.9%	0.475	0.194	0.51%
Alimtia Investment Group	0.074	0.000	-0.54%	0.43	NM	12.10	76	-2%	-37%	0.03	0.46	-1.0%	-0.1%	0.140	0.069	0.21%
Kuwait Real Estate	0.100	-0.003	-3.30%	0.73	12.13	2.83	92	-1%	-43%	0.37	3.70	6.0%	2.5%	0.187	0.097	0.26%
Integrated Holding	0.356	-0.004	-1.11%	1.47	27.22	2.78	90	-6%	-4%	0.06	0.16	5.4%	3.4%	0.478	0.350	0.25%
ALI ALGanim	0.780	-0.014	-1.76%	7.90	12.23	0.00	216	-1%	nm	0.16	0.21	27.8%	10.9%	0.966	0.750	0.61%
Total		-209.46	-2.61%	2.19	31.32	4.41	35,731	-1.3%	2.5%	72.09	106.33					101%

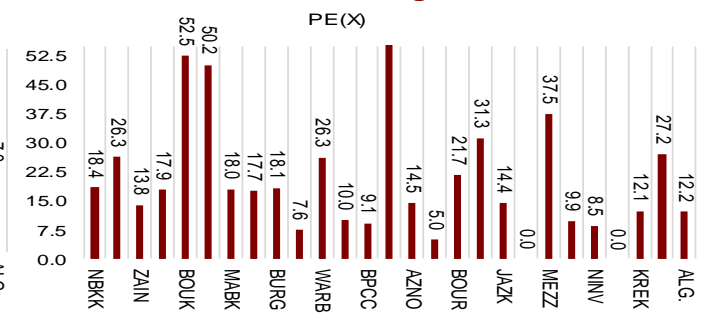
Market Capitalization



Price to Book Value

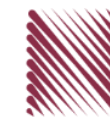


Price to Earning Value

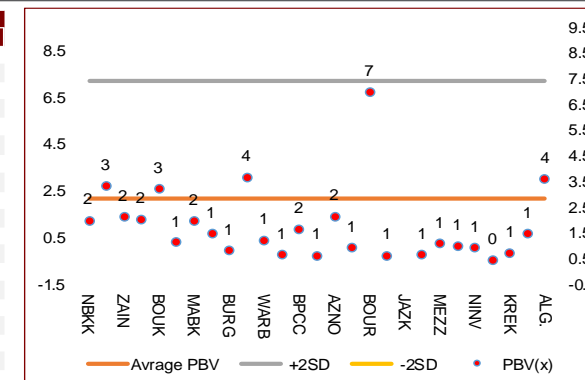


DAILY MARKET COVERAGE REPORT

NIC MENA SECURITIES - RESEARCH AND STUDIES DEP



Premier Market Company	Price			Valuation Multiples			MKT Cap Mn KD	Price Performance		ROE (%)	ROA (%)
	Close (KD)	Day Δ	Day % Δ	PBV(X)	PE (X)	DY%		MTD(%)	YTD (%)		
National Bank of Kuwait	1.020	-0.006	-0.58%	1.98	18.4	2.37	7,703	4.5%	7.4%	10.9%	1.4%
Kuwait Finance House	0.775	-0.049	-5.95%	3.32	26.3	1.32	10,254	-7.8%	2.5%	12.8%	1.6%
Mobile Telecommunications	0.585	-0.005	-0.85%	2.13	13.8	5.59	2,531	0.0%	-1.7%	15.6%	4.3%
Ahli United Bank BSC	0.305	0.000	0.00%	2.04	17.9	2.72	3,400	0.0%	20.7%	11.3%	1.6%
Boubyan Bank	0.797	-0.011	-1.36%	3.22	52.5	0.56	2,979	4.2%	11.9%	6.7%	0.8%
Agility Public Warehousing	0.654	-0.023	-3.40%	1.12	50.2	2.46	1,652	-2.1%	-17.0%	2.7%	2.2%
Mabaneer Co.	0.850	-0.014	-1.62%	1.94	18.0	1.53	1,055	-1.5%	13.6%	11.2%	5.4%
Gulf Bank	0.312	-0.009	-2.80%	1.46	17.7	2.08	988	4.0%	17.4%	8.5%	0.8%
Burgan Bank	0.214	-0.003	-1.38%	0.79	18.1	2.19	703	-3.6%	-10.5%	4.3%	0.7%
Human Soft Holding	3.300	-0.070	-2.08%	3.65	7.6	11.87	401	0.8%	2.4%	48.7%	39.9%
Warba Bank	0.222	-0.004	-1.77%	1.21	26.3	0.00	444	0.5%	-19.0%	4.8%	0.6%
Qurain Petrochemical Industries	0.261	-0.008	-2.97%	0.64	10.0	6.69	280	-3.7%	-24.8%	6.4%	5.2%
Boubyan Petrochemical	0.803	-0.009	-1.11%	1.64	9.1	7.39	419	-3.3%	-5.8%	19.1%	10.1%
Kuwait Projects Company Holding	0.118	-0.005	-4.07%	0.62	302.6	4.07	289	-11.3%	-16.9%	0.2%	0.1%
Shamal Az-Zour Al-Oula Power & Water	0.190	-0.003	-1.55%	2.14	14.5	9.33	209	-2.2%	-16.7%	19.1%	2.9%
National Industries Group Holding	0.219	-0.008	-3.52%	0.92	5.0	4.89	472	-4.4%	-9.1%	15.2%	6.5%
Boursa Kuwait Securities Co	2.029	-0.056	-2.69%	6.99	21.7	3.12	407	-2.4%	0.4%	33.9%	22.2%
Kuwait International Bank	0.197	-0.003	-1.50%	0.62	31.3	1.92	209	-0.5%	-6.0%	1.9%	0.4%
Jazeera Airways	1.778	0.068	3.98%	12.85	14.4	2.69	391	7.4%	37.8%	164.8%	12.1%
Alafco Aviation Lease and Finance	0.175	-0.004	-2.23%	0.65	NM	0.00	167	0.6%	-19.7%	-15.9%	-3.4%
Mezzan Holding	0.366	-0.012	-3.17%	1.07	37.5	4.15	114	-2.1%	-36.6%	2.8%	1.3%
Gulf Cable and Electrical Industries	1.070	-0.020	-1.83%	0.99	9.9	5.50	223	0.0%	22.8%	11.0%	9.0%
National Investments	0.228	-0.011	-4.60%	0.91	8.5	18.83	182	-1.3%	4.1%	10.9%	8.9%
Alimtiiaz Investment Group	0.074	0.000	-0.54%	0.43	NM	12.10	76	-2.0%	-37.3%	-1.0%	-0.1%
Kuwait Real Estate	0.100	-0.003	-3.30%	0.73	12.1	2.83	92	-1.4%	-42.7%	6.0%	2.5%
Integrated Holding	0.356	-0.004	-1.11%	1.47	27.2	2.78	90	-6.3%	-3.8%	5.4%	3.4%
ALI ALGanim	0.780	-0.014	-1.76%	3.60	12.2	0.00	216	-0.6%	nm	27.8%	10.9%
Total		-209.46	-2.61%	2.19	31.32	4.41	35,731	-1.3%	2.5%		



Premier Market Description	Price			Moving Average		RSI 14 Day	MKT Cap Mn KD	Price Performance		52 Week (KD)	
	Close (KD)	Day Δ	Day % Δ	50 Day	200 Day			MTD(%)	YTD (%)	High	Low
Premier Index	7,831	-209.46	-2.61%	8,449	8,418	34	35,731	-1.3%	2.7%	9,437	7,344

Top 5 Performrs (Today's Price Change)

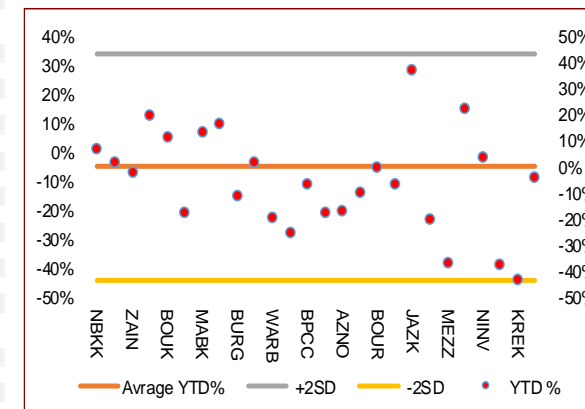
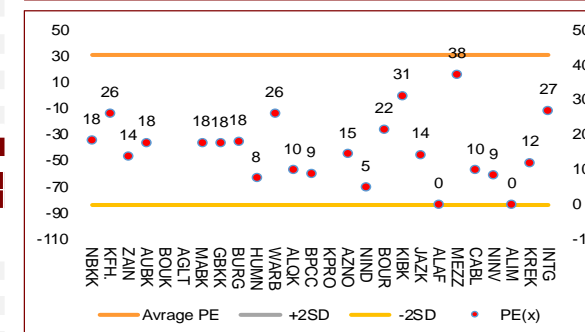
Ahli United Bank BSC	0.305	0.000	0.00%	0.305	0.283	50	3,400	0.0%	20.7%	0.336	0.240
Alimtiiaz Investment Group	0.074	0.000	-0.54%	0.088	0.110	25	76	-2.0%	-37.3%	0.140	0.069
National Bank of Kuwait	1.020	-0.006	-0.58%	1.043	1.028	45	7,703	4.5%	7.4%	1.104	0.890
Mobile Telecommunications	0.585	-0.005	-0.85%	0.602	0.611	48	2,531	0.0%	-1.7%	0.698	0.564
Boubyan Petrochemical	0.803	-0.009	-1.11%	0.897	0.942	12	419	-3.3%	-5.8%	1.125	0.769

Middel Performrs (Today's Price Change)

Integrated Holding	0.356	-0.004	-1.11%	0.399	0.401	28	90	-6.3%	-3.8%	0.478	0.350
Boubyan Bank	0.797	-0.011	-1.36%	0.821	0.800	42	2,979	4.2%	11.9%	0.965	0.681
Burgan Bank	0.214	-0.003	-1.38%	0.234	0.254	25	703	-3.6%	-10.5%	0.307	0.205
Kuwait International Bank	0.197	-0.003	-1.50%	0.211	0.220	29	209	-0.5%	-6.0%	0.259	0.192
Shamal Az-Zour Al-Oula Power & Water	0.190	-0.003	-1.55%	0.199	0.214	18	209	-2.6%	-16.7%	0.247	0.189
Mabaneer Co.	0.850	-0.014	-1.62%	0.838	0.808	35	1,055	-1.5%	13.6%	0.910	0.715
Warba Bank	0.222	-0.004	-1.77%	0.242	0.263	29	444	0.5%	-19.0%	0.298	0.216
Gulf Cable and Electrical Industries	1.070	-0.020	-1.83%	1.367	1.312	25	223	0.0%	22.8%	1.850	0.829
Human Soft Holding	3.300	-0.070	-2.08%	3.358	3.310	44	401	0.8%	2.4%	3.704	3.006
Alafco Aviation Lease and Finance	0.175	-0.004	-2.23%	0.100	0.100	32	167	0.6%	-19.7%	1.210	0.996
Boursa Kuwait Securities Co	2.029	-0.056	-2.69%	2.311	2.355	28	407	-2.4%	0.4%	2.870	1.800
Gulf Bank	0.312	-0.009	-2.80%	0.340	0.316	37	988	4.0%	17.4%	0.385	0.224
Qurain Petrochemical Industries	0.261	-0.008	-2.97%	0.305	0.349	10	280	-3.7%	-24.8%	0.403	0.255
Mezzan Holding	0.366	-0.012	-3.17%	0.410	0.507	18	114	-2.1%	-36.6%	0.632	0.358
Kuwait Real Estate	0.100	-0.003	-3.30%	0.121	0.150	26	92	-1.4%	-42.7%	0.187	0.097

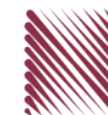
Bottom 5 Performrs (Today's Price Change)

Agility Public Warehousing	0.654	-0.023	-3.40%	0.808	0.860	24	1,652	-2.1%	-17.0%	1.062	0.634
National Industries Group Holding	0.219	-0.008	-3.52%	0.263	0.260	21	472	-4.4%	-9.1%	0.314	0.202
Kuwait Projects Company Holding	0.118	-0.005	-4.07%	0.150	0.164	17	289	-11.3%	-16.9%	0.215	0.118
National Investments	0.228	-0.011	-4.60%	0.281	0.313	28	182	-1.3%	4.1%	0.475	0.194
Kuwait Finance House	0.775	-0.049	-5.95%	0.876	0.871	25	10,254	-7.8%	2.5%	1.039	0.720



DAILY MARKET COVERAGE REPORT

NIC MENA SECURITIES - RESEARCH AND STUDIES DEP



Banking Sector	Price			Valuation Multiples			MKT Cap	Price Performance		Trading Indicators		ROE	ROA	52 Week (KD)		MKT Cap
	Company	Close (KD)	Day Δ	Day % Δ	PBV(X)	PE(X)		DY%	Mn KD	MTD(%)	YTD (%)			Value (Mn KD)	(Mn Shrs)	
National Bank of Kuwait	1.020	-0.006	-0.58%	1.98	18.44	2.37	7,703	4.5%	7.4%	3.46	3.39	10.9%	1.4%	1.104	0.890	17.21%
Kuwait Finance House	0.775	-0.049	-5.95%	3.32	26.32	1.32	10,254	-7.8%	2.5%	55.31	70.03	12.8%	1.6%	1.039	0.720	22.91%
Ahli United Bank BSC	0.305	0.000	0.00%	2.04	17.93	2.72	3,400	0.0%	20.7%	0.00	0.00	11.3%	1.6%	0.336	0.240	7.60%
Boubyan Bank	0.797	-0.011	-1.36%	3.22	52.54	0.56	2,979	4.2%	11.9%	0.55	0.69	6.7%	0.8%	0.965	0.681	6.66%
Commercial Bank of Kuwait	0.487	-0.004	-0.81%	1.15	12.14	4.07	965	0.4%	-2.8%	0.00	0.00	9.9%	1.9%	0.549	0.466	2.15%
Gulf Bank	0.312	-0.009	-2.80%	1.46	17.66	2.08	988	4.0%	17.4%	0.87	2.76	8.5%	0.8%	0.385	0.224	2.21%
Burgan Bank	0.214	-0.003	-1.38%	0.79	18.12	2.19	703	-3.6%	-10.5%	0.31	1.46	4.3%	0.7%	0.307	0.205	1.57%
Ahli United Bank	0.260	-0.003	-1.14%	0.90	23.96	1.81	586	-0.4%	-11.7%	0.08	0.29	3.7%	0.7%	0.324	0.250	1.31%
Warba Bank	0.222	-0.004	-1.77%	1.21	26.30	0.00	444	0.5%	-19.0%	0.65	2.94	4.8%	0.6%	0.298	0.216	0.99%
Al Ahli Bank of Kuwait	0.280	-0.011	-3.78%	0.83	20.71	1.64	496	-5.1%	15.7%	0.06	0.21	4.0%	0.6%	0.355	0.213	1.11%
Kuwait International Bank	0.197	-0.003	-1.50%	0.62	31.32	1.92	209	-0.5%	-6.0%	0.13	0.64	1.9%	0.4%	0.259	0.192	0.47%
Total Banking Sector - 11 Companies							28,727			61.42	82.41					64.17%

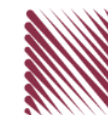
Basic Materials	Price			Valuation Multiples			MKT Cap	Price Performance		Trading Indicators		ROE	ROA	52 Week (KD)		MKT Cap
	Company	Close (KD)	Day Δ	Day % Δ	PBV(X)	PE(X)		DY%	Mn KD	MTD(%)	YTD (%)			Value (Mn KD)	(Mn Shrs)	
Qurain Petrochemical Industries	0.261	-0.008	-2.97%	0.64	9.98	6.69	280	-3.69%	-24.78%	0.13	0.49	6.4%	5.2%	0.403	0.255	0.63%
Boubyan Petrochemical	0.803	-0.009	-1.11%	1.64	9.08	7.39	419	-3.25%	-5.75%	0.11	0.14	19.1%	10.1%	1.125	0.769	0.94%
Al Kout Industrial Projects	0.390	-0.016	-3.94%	1.40	4.93	9.85	39	-3.94%	-21.37%	0.00	0.00	30.5%	20.1%	0.545	0.390	0.09%
Kuwait Foundry	0.296	0.001	0.34%	1.23	12.61	0.00	21	2.07%	-19.78%	0.00	0.00	10.7%	10.3%	0.424	0.260	0.05%
Total Basic Materials - 4 Companies							760			0.24	0.63					1.70%

Consumer Goods	Price			Valuation Multiples			MKT Cap	Price Performance		Trading Indicators		ROE	ROA	52 Week (KD)		MKT Cap
	Company	Close (KD)	Day Δ	Day % Δ	PBV(X)	PE(X)		DY%	Mn KD	MTD(%)	YTD (%)			Value (Mn KD)	(Mn Shrs)	
Mezzan Holding	0.366	-0.012	-3.17%	1.07	37.50	4.15	114	-2.1%	-36.6%	0.28	0.76	2.8%	1.3%	0.632	0.358	0.25%
Livestock Transport and Trading	0.123	-0.006	-4.65%	0.76	NM	0.00	26	2.5%	-32.4%	0.00	0.00	-14.5%	-8.2%	0.196	0.114	0.06%
Total Consumer Goods - 2 Companies							140			0.28	0.76					0.31%

Consumer Services	Price			Valuation Multiples			MKT Cap	Price Performance		Trading Indicators		ROE	ROA	52 Week (KD)		MKT Cap
	Company	Close (KD)	Day Δ	Day % Δ	PBV(X)	PE(X)		DY%	Mn KD	MTD(%)	YTD (%)			Value (Mn KD)	(Mn Shrs)	
Jazeera Airways	1.778	0.068	3.98%	12.85	14.38	2.69	391	7.4%	37.8%	0.32	0.18	164.8%	12.1%	2.099	0.835	0.87%
Kuwait National Cinema	0.890	0.000	0.00%	1.09	8.67	3.37	82	0.0%	0.9%	0.00	0.00	13.3%	6.1%	0.933	0.815	0.18%
Oula Fuel Marketing	0.146	0.000	0.00%	0.90	15.75	3.42	59	0.7%	-6.4%	0.00	0.00	5.6%	2.9%	0.178	0.140	0.13%
Al Soor Fuel Marketing	0.149	0.002	1.36%	0.88	19.01	3.40	60	-0.7%	-3.9%	0.00	0.02	4.8%	3.6%	0.175	0.142	0.13%
Sultan Center Food Products	0.108	-0.004	-3.57%	0.62	0.86	0.00	30	-6.1%	-48.6%	0.01	0.08	74.2%	12.2%	0.269	0.103	0.07%
Jiyad Holding	0.024	-0.003	-10.19%	0.27	NM	0.00	4	-10.9%	-70.5%	0.09	3.91	-16.2%	-10.9%	0.099	0.015	0.01%
IFA Hotels and Resorts	0.027	-0.001	-4.30%	3.52	178.00	0.00	17	-3.6%	-50.1%	0.00	0.18	2.0%	0.4%	0.073	0.025	0.04%
Kuwait Resorts	0.074	-0.002	-2.63%	0.48	10.42	3.87	15	-4.6%	-23.3%	0.01	0.19	4.8%	4.2%	0.110	0.067	0.03%
Future Kid Entertainment and Real Estate	0.108	-0.001	-0.92%	0.93	9.45	0.00	12	-0.9%	37.2%	0.06	0.60	10.4%	4.7%	0.130	0.074	0.03%
Al Eid Food	0.222	-0.002	-0.89%	1.75	13.50	3.05	38	0.5%	-3.8%	0.02	0.09	13.5%	10.1%	0.304	0.207	0.08%
Kuwait Hotels	0.178	0.000	0.00%	2.23	20.60	2.81	10	-3.3%	154.3%	0.00	0.00	11.1%	7.4%	0.201	0.070	0.02%
Palms Agro Production	0.077	0.000	0.00%	0.78	NM	0.00	4	0.0%	12.3%	0.00	0.00	-13.8%	-10.9%	0.090	0.043	0.01%
ALI ALGanim	0.780	-0.014	-1.76%	3.60	12.23	0.00	216	-0.6%	nm	0.16	0.21	27.8%	10.9%	0.966	0.750	0.48%
Total Consumer Services - 13 Companies							939			0.69	5.46					2.10%

DAILY MARKET COVERAGE REPORT

NIC MENA SECURITIES - RESEARCH AND STUDIES DEP



Financial Services	Price			Valuation Multiples			MKT Cap	Price Performance		Trading Indicators		ROE	ROA	52 Week (KD)		MKT Cap
	Company	Close (KD)	Day Δ	Day % Δ	PBV(X)	PE(X)	DY%	Mn KD	MTD(%)	YTD (%)	Value (Mn KD)	(Mn Shrs)	(%)	(%)	High	Low
Egypt Kuwait Holding	0.380	0.000	0.00%	2.22	6.02	5.62	428	-1.0%	-10.4%	0.00	0.01	37.1%	17.5%	0.465	0.353	0.96%
Kuwait Projects Company Holding	0.118	-0.005	-4.07%	0.62	302.56	4.07	289	-11.3%	-16.9%	0.10	0.88	0.2%	0.1%	0.215	0.118	0.64%
National Industries Group Holding	0.219	-0.008	-3.52%	0.92	5.04	4.89	472	-4.4%	-9.1%	0.82	3.73	15.2%	6.5%	0.314	0.202	1.05%
Boursa Kuwait Securities Co	2.029	-0.056	-2.69%	6.99	21.70	3.12	407	-2.4%	0.4%	0.15	0.07	33.9%	22.2%	2.870	1.800	0.91%
GFH Financial Group	0.075	-0.003	-4.34%	0.90	9.62	4.63	261	-3.5%	-23.7%	0.63	8.43	9.3%	1.2%	0.109	0.065	0.58%
National Investments	0.228	-0.011	-4.60%	0.91	8.52	18.83	182	-1.3%	4.1%	0.19	0.84	10.9%	8.9%	0.475	0.194	0.41%
Tamdeen Investment	0.470	0.000	0.00%	0.54	12.15	2.13	160	-1.1%	24.0%	0.00	0.00	4.9%	3.8%	0.519	0.309	0.36%
Alimtiq Investment Group	0.074	0.000	-0.54%	0.43	NM	12.10	76	-2.0%	-37.3%	0.03	0.46	-1.0%	-0.1%	0.140	0.069	0.17%
Commercial Facilities	0.172	-0.003	-1.71%	0.55	6.37	8.57	87	0.0%	-16.5%	0.01	0.09	8.8%	5.0%	0.228	0.165	0.20%
Aayan Leasing and Investment	0.108	-0.004	-3.57%	0.82	11.08	0.00	72	-3.6%	-34.7%	0.27	2.52	7.7%	5.8%	0.204	0.104	0.16%
Kuwait Investment	0.127	-0.003	-2.31%	0.61	7.36	19.23	70	-1.6%	-54.8%	0.07	0.57	8.1%	4.6%	0.317	0.113	0.16%
Noor Financial Investment	0.176	-0.004	-2.22%	1.09	4.92	2.67	90	-2.2%	-30.8%	0.00	0.01	22.7%	16.0%	0.319	0.163	0.20%
Arzan Financial Group for Financing and Investmei	0.119	-0.008	-6.30%	0.80	7.47	1.90	96	-1.7%	-23.5%	0.05	0.42	11.3%	8.2%	0.180	0.109	0.21%
Kuwait Financial Centre	0.103	-0.011	-9.65%	0.50	7.79	8.35	52	-14.2%	-40.2%	0.05	0.50	6.9%	4.0%	0.197	0.101	0.12%
Gulf Investment House	0.405	-0.004	-0.98%	3.86	NM	0.00	165	-0.7%	35.0%	0.06	0.14	-3.0%	-2.0%	0.422	0.217	0.37%
Arabi Group Holdings	0.249	-0.011	-4.23%	1.49	NM	0.00	41	-7.4%	-14.4%	0.12	0.47	-29.0%	-4.0%	0.499	0.142	0.09%
Kuwait and Middle East Financial Investment	0.110	0.001	0.92%	0.95	12.81	6.42	24	-4.3%	-26.7%	0.00	0.00	7.5%	5.2%	0.175	0.105	0.05%
Privatization Holding	0.032	-0.003	-7.69%	0.27	NM	0.00	20	-10.0%	-40.9%	0.05	1.39	-7.1%	-5.5%	0.070	0.032	0.04%
Asiya Capital Investments	0.039	-0.001	-3.47%	0.35	2.15	0.00	30	-3.2%	-25.2%	0.05	1.26	17.9%	17.6%	0.071	0.039	0.07%
Umm Al Qaiwain General Investment Co	0.093	0.000	0.00%	0.57	4.97	5.38	34	0.0%	6.7%	0.00	0.00	12.0%	10.0%	0.108	0.075	0.08%
Securities House	0.057	-0.003	-5.47%	0.57	9.74	0.00	24	-0.2%	-42.3%	0.12	2.11	5.8%	5.0%	0.115	0.052	0.05%
Kamco Investment	0.093	-0.002	-1.90%	0.51	3.67	10.58	32	-6.3%	-28.1%	0.02	0.25	14.5%	6.9%	0.167	0.089	0.07%
First Investment	0.074	-0.004	-4.53%	0.64	105.43	0.00	33	3.1%	-12.4%	0.03	0.39	0.6%	0.7%	0.104	0.068	0.07%
Inovest BSC Public	0.076	-0.002	-2.58%	0.00	NM	0.00	22	-3.4%	-35.9%	0.03	0.42	2.7%	1.7%	0.189	0.070	0.05%
Coast Investment and Development	0.075	0.001	0.81%	0.74	10.25	6.73	35	-5.8%	-28.7%	0.00	0.00	7.2%	6.8%	0.127	0.071	0.08%
Al Madar Investment	0.101	0.000	0.00%	0.95	59.06	0.00	21	0.7%	-15.1%	0.00	0.00	1.6%	1.7%	0.128	0.083	0.05%
Bayan Investment	0.035	0.000	0.00%	0.31	NM	0.00	13	0.0%	-28.8%	0.00	0.00	-0.5%	-0.6%	0.060	0.031	0.03%
Al Manar Financing and Leasing	0.056	0.000	0.00%	0.55	18.08	0.00	15	5.1%	-11.0%	0.00	0.00	2.9%	2.3%	0.079	0.049	0.03%
Manazel Holding	0.027	-0.001	-1.79%	0.60	9.38	0.00	12	-3.5%	-46.5%	0.03	0.94	6.2%	2.0%	0.060	0.025	0.03%
Kuwait Finance and Investment	0.062	0.000	0.00%	0.46	26.96	0.00	19	-3.1%	-28.6%	0.00	0.00	1.7%	1.6%	0.104	0.057	0.04%
National International Holding	0.100	0.002	2.04%	0.58	7.47	4.95	22	-7.4%	-32.2%	0.01	0.06	7.6%	5.3%	0.171	0.091	0.05%
Osoul Investment	0.073	0.004	5.65%	0.67	NM	15.35	9	0.7%	-10.8%	0.01	0.10	-4.4%	-4.0%	0.118	0.062	0.02%
UniCap Investment and Finance	0.055	0.000	0.00%	0.61	64.59	0.00	12	-4.9%	-19.9%	0.00	0.00	1.9%	0.2%	0.097	0.051	0.03%
Amar Finance and Leasing	0.061	-0.003	-4.09%	0.56	3.31	0.00	12	-4.2%	-6.9%	0.00	0.03	18.6%	17.3%	0.097	0.057	0.03%
Gulf North Africa Holding	0.134	-0.002	-1.47%	1.72	59.40	0.00	20	-0.7%	55.6%	0.22	1.61	3.0%	2.4%	0.141	0.057	0.04%
International Financial Advisors	0.089	-0.004	-3.99%	0.58	35.74	0.00	22	-1.7%	-21.2%	0.00	0.03	1.9%	0.7%	0.129	0.082	0.05%
Credit Rating and Collection	0.016	0.000	-2.44%	0.55	NM	0.00	3	-7.0%	-60.2%	0.00	0.03	-0.4%	-0.3%	0.069	0.014	0.01%
Ekttitab Holding	0.011	-0.001	-5.31%	0.35	NM	0.00	3	-2.7%	-49.8%	0.02	1.53	-16.8%	-12.9%	0.024	0.009	0.01%
Kuwait Syrian Holding Co	0.035	0.000	0.00%	0.34	5.65	0.00	6	-5.4%	-18.2%	0.00	0.00	8.7%	6.2%	0.060	0.026	0.01%
Warba Capital Holding	0.098	0.000	0.00%	1.09	NM	0.00	10	0.0%	14.0%	0.00	0.00	-0.8%	-0.7%	0.137	0.070	0.02%
National Consumer Holding	0.106	-0.005	-4.50%	4.80	NM	0.00	32	-5.4%	-11.6%	0.95	8.83	-8.0%	-7.5%	0.190	0.097	0.07%
Al Deera Holding	0.167	0.002	1.21%	1.12	8.41	0.00	15	0.0%	-16.5%	0.00	0.00	12.5%	6.5%	0.200	0.145	0.03%
AL Safat Investment	0.104	-0.005	-4.59%	1.33	NM	0.00	29	-7.1%	-14.7%	0.40	3.79	-1.8%	-1.6%	0.270	0.099	0.07%
Gulf Franchising Holding	0.081	0.000	0.00%	1.59	NM	0.00	3	-2.3%	-15.5%	0.00	0.00	-5.7%	-1.6%	0.148	0.050	0.01%
Total Financial Services - 44 Companies							3,479			4.49	41.91					7.77%

DAILY MARKET COVERAGE REPORT

NIC MENA SECURITIES - RESEARCH AND STUDIES DEP

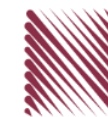


Health Care	Price			Valuation Multiples			MKT Cap	Price Performance		Trading Indicators		ROE	ROA	52 Week (KD)		MKT Cap
	Company	Close (KD)	Day Δ	Day % Δ	PBV(X)	PE(X)		DY%	Mn KD	MTD(%)	YTD (%)			Value (Mn KD)	(Mn Shrs)	
Al-Maidan Clinic for Oral Health Services	0.569	0.000	0.00%	2.51	13.91	0.00	142	0.0%	-54.1%	0.00	0.00	19.4%	12.5%	1.260	0.500	0.32%
Advanced Technology	0.520	0.000	0.00%	1.16	11.23	2.88	78	0.0%	0.4%	0.00	0.00	10.7%	2.1%	0.595	0.450	0.17%
Yiaco Medical	0.450	0.000	0.00%	43.51	NM	0.00	8	0.0%	2.7%	0.00	0.00	-161.7%	-4.7%	0.480	0.399	0.02%
Total Health Care - 3 Companies							228			0.00	0.00					0.51%

Industrials	Price			Valuation Multiples			MKT Cap	Price Performance		Trading Indicators		ROE	ROA	52 Week (KD)		MKT Cap
	Company	Close (KD)	Day Δ	Day % Δ	PBV(X)	PE(X)		DY%	Mn KD	MTD(%)	YTD (%)			Value (Mn KD)	(Mn Shrs)	
Agility Public Warehousing	0.654	-0.023	-3.40%	1.12	50.23	2.46	1,652	-2.1%	-17.0%	4.32	6.54	2.7%	2.2%	1.062	0.634	3.69%
Human Soft Holding	3.300	-0.070	-2.08%	3.65	7.63	11.87	401	0.8%	2.4%	0.18	0.06	48.7%	39.9%	3.704	3.006	0.90%
Alafco Aviation Lease and Finance	0.175	-0.004	-2.23%	0.65	NM	0.00	167	0.6%	-19.7%	0.17	0.97	-15.9%	-3.4%	0.256	0.167	0.37%
Kuwait Cement	0.200	-0.011	-5.21%	0.73	NM	2.37	143	-3.4%	-13.4%	0.06	0.30	-1.1%	-0.7%	0.295	0.198	0.32%
Gulf Cable and Electrical Industries	1.070	-0.020	-1.83%	0.99	9.92	5.50	223	0.0%	22.8%	0.13	0.13	11.0%	9.0%	1.850	0.829	0.50%
Integrated Holding	0.356	-0.004	-1.11%	1.47	27.22	2.78	90	-6.3%	-3.8%	0.06	0.16	5.4%	3.4%	0.478	0.350	0.20%
Kuwait Portland Cement	0.780	-0.026	-3.23%	1.09	16.32	8.68	78	-4.2%	-20.4%	0.00	0.00	6.8%	5.3%	1.240	0.751	0.17%
Educational Holding Group	3.000	0.000	0.00%	5.10	11.39	17.76	63	0.0%	-25.0%	0.00	0.00	30.0%	17.2%	5.073	2.744	0.14%
United Projects for Aviation Services	0.204	0.007	3.55%	0.75	72.86	0.00	77	-7.7%	-17.7%	0.00	0.00	1.0%	0.6%	0.318	0.182	0.17%
Heavy Engineering Industries and Shipbuilding	0.636	-0.004	-0.63%	1.71	21.01	3.13	115	-1.2%	25.0%	0.74	1.15	8.2%	3.2%	0.960	0.442	0.26%
National Industries	0.190	0.000	0.00%	0.76	11.08	5.26	67	5.0%	-1.6%	0.01	0.05	6.8%	5.1%	0.260	0.181	0.15%
ACICO Industries	0.081	-0.001	-1.34%	0.37	NM	0.00	27	-8.0%	-41.7%	0.01	0.06	-1.9%	-0.5%	0.208	0.076	0.06%
Kuwait Company for Process Plant Construction a	0.321	0.000	0.00%	1.29	20.80	7.71	38	6.6%	-32.3%	0.01	0.02	6.1%	3.5%	0.523	0.286	0.09%
Ras Al Khaimah for White Cement and Constructi	0.140	0.000	0.00%	1.24	27.79	5.92	70	-4.8%	11.1%	0.00	0.00	4.6%	3.7%	0.175	0.090	0.16%
Combined Group Contracting	0.370	-0.010	-2.63%	1.37	5.67	6.58	63	-7.3%	4.5%	0.01	0.03	26.3%	5.8%	0.500	0.308	0.14%
Kuwait and Gulf Link Transport	0.059	-0.001	-1.85%	0.35	3.16	0.00	16	3.5%	-14.2%	0.01	0.10	11.6%	2.6%	0.106	0.051	0.04%
Shuaiba Industrial	0.154	-0.001	-0.65%	0.85	12.81	7.74	15	-4.9%	-31.6%	0.01	0.04	6.6%	5.4%	0.310	0.137	0.03%
National Cleaning	0.035	0.000	-0.57%	0.28	NM	0.00	8	3.2%	-38.5%	0.00	0.01	-13.9%	-4.1%	0.080	0.031	0.02%
Fujairah Cement Industries	0.039	0.000	0.00%	0.19	NM	0.00	14	-0.3%	-27.0%	0.00	0.00	-12.7%	-6.3%	0.069	0.028	0.03%
Mubarrad Holding	0.075	0.002	2.46%	0.59	6.35	6.83	12	-2.5%	-31.8%	0.00	0.07	9.3%	8.2%	0.130	0.071	0.03%
Specialities Group Holding	0.087	0.000	-0.46%	0.46	9.40	7.82	14	3.0%	-30.4%	0.02	0.24	5.0%	3.6%	0.160	0.076	0.03%
Salbookh Trading	0.018	0.001	7.06%	0.55	NM	0.00	2	-3.2%	-58.1%	0.00	0.02	-51.7%	-28.6%	0.072	0.016	0.00%
Metal and Recycling	0.074	0.000	0.00%	0.96	NM	0.00	7	0.0%	-22.1%	0.00	0.00	-12.0%	-2.0%	0.136	0.068	0.01%
Equipment Holding	0.033	0.002	5.16%	0.52	NM	0.00	3	-4.1%	-40.2%	0.00	0.00	-11.1%	-3.2%	0.079	0.030	0.01%
Jassim Transport & Stevedoring	0.319	0.000	0.00%	1.08	13.91	5.02	48	-3.0%	-21.6%	0.01	0.12	8.0%	6.3%	0.450	0.307	0.11%
Total Industrials - 24 Companies							3,412			5.74	10.08					7.62%

DAILY MARKET COVERAGE REPORT

NIC MENA SECURITIES - RESEARCH AND STUDIES DEP



Insurance	Price			Valuation Multiples			MKT Cap	Price Performance		Trading Indicators		ROE	ROA	52 Week (KD)		MKT Cap
Company	Close (KD)	Day Δ	Day % Δ	PBV(X)	PE(X)	DY%	Mn KD	MTD(%)	YTD (%)	Value (Mn KD)	(Mn Shrs)	(%)	(%)	High	Low	%
Gulf Insurance Group	1.016	0.000	0.00%	1.18	4.35	10.43	288	2.1%	-5.0%	0.00	0.00	28.6%	5.5%	1.200	0.866	0.64%
Al Ahleia Insurance	0.563	0.000	0.00%	0.94	7.77	6.22	122	18.3%	11.5%	0.00	0.00	12.5%	4.4%	0.612	0.453	0.27%
Kuwait Insurance	0.446	0.000	0.00%	0.67	6.91	7.40	82	-0.9%	15.2%	0.00	0.00	10.4%	6.1%	0.497	0.379	0.18%
Kuwait Reinsurance	0.295	0.000	0.00%	1.07	10.42	1.55	70	0.0%	16.9%	0.00	0.00	10.8%	3.4%	0.373	0.217	0.16%
Bahrain Kuwait Insurance	0.191	0.000	0.00%	1.33	11.98	8.44	29	0.0%	0.0%	0.00	0.00	11.0%	2.1%	0.191	0.191	0.06%
Warba Insurance and Reinsurance	0.123	-0.006	-4.65%	0.53	8.55	7.75	21	-4.7%	-22.6%	0.00	0.00	6.2%	2.1%	0.176	0.119	0.05%
First Takaful Insurance	0.048	0.000	0.00%	0.63	296.88	0.00	5	0.0%	-5.0%	0.00	0.00	0.2%	0.1%	0.081	0.034	0.01%
Wethaq Takaful Insurance	0.037	0.000	0.00%	0.33	19.37	0.00	4	3.6%	-27.3%	0.00	0.00	1.7%	1.7%	0.102	0.024	0.01%
Total Insurance - 8 Companies							621			0.00	0.00					1.39%

Energy	Price			Valuation Multiples			MKT Cap	Price Performance		Trading Indicators		ROE	ROA	52 Week (KD)		MKT Cap
Company	Close (KD)	Day Δ	Day % Δ	PBV(X)	PE(X)	DY%	Mn KD	MTD(%)	YTD (%)	Value (Mn KD)	(Mn Shrs)	(%)	(%)	High	Low	%
National Petroleum Services	0.767	0.022	2.95%	1.94	13.75	4.70	74	2.3%	-6.5%	0.00	0.00	14.5%	11.6%	0.880	0.625	0.17%
Independent Petroleum Group	0.441	0.000	0.00%	0.81	14.77	6.80	80	-6.8%	-25.0%	0.00	0.00	5.5%	1.0%	0.614	0.368	0.18%
Burgan for Well Drilling Trading and Maintenance	0.112	-0.005	-4.27%	0.38	8.79	2.49	27	-2.6%	-21.7%	0.01	0.12	4.4%	1.4%	0.172	0.100	0.06%
Energy House Holding	0.019	-0.002	-9.27%	0.67	NM	0.00	14	-3.1%	-70.5%	0.00	0.21	-1.4%	-2.5%	0.086	0.019	0.03%
Gulf Petroleum Investment	0.016	0.000	-0.63%	0.22	NM	0.00	7	-1.9%	-35.1%	0.06	3.59	-4.0%	-2.6%	0.031	0.013	0.02%
Senergy Holding	0.039	-0.001	-1.28%	0.77	45.83	0.00	8	-3.7%	-21.4%	0.00	0.00	1.7%	1.4%	0.063	0.036	0.02%
Total Energy - 6 Companies							210			0.07	3.92					0.47%

DAILY MARKET COVERAGE REPORT

NIC MENA SECURITIES - RESEARCH AND STUDIES DEP



Real Estate	Price		Valuation Multiples				MKT Cap	Performance		Trading Indicators		ROE	ROA	2 Week (KD)		MKT Cap
Company	Close (KD)	Day Δ	Day % Δ	PBV(X)	PE(X)	DY%	Mn KD	MTD(%)	YTD (%)	Value (Mn KD)	(Mn Shrs)	(%)	(%)	High	Low	%
Mabane Co.	0.850	-0.014	-1.62%	1.94	17.98	1.53	1,055	-1.5%	13.6%	0.90	1.05	11.2%	5.4%	0.910	0.715	2.36%
Salhia Real Estate	0.473	0.000	0.00%	1.57	20.21	3.02	243	6.1%	-6.1%	0.44	0.93	7.9%	3.2%	0.578	0.428	0.54%
Commercial Real Estate	0.099	-0.002	-2.08%	0.60	10.15	4.96	174	-0.3%	-21.0%	0.04	0.41	6.2%	3.3%	0.140	0.094	0.39%
National Real Estate	0.129	-0.009	-6.52%	0.72	1.17	0.00	240	-3.7%	-30.0%	0.62	4.71	64.5%	38.6%	0.212	0.125	0.54%
Tamdeen Real Estate	0.308	0.000	0.00%	0.60	7.09	3.25	124	-5.2%	-9.1%	0.00	0.00	9.2%	3.9%	0.375	0.296	0.28%
Kuwait Real Estate	0.100	-0.003	-3.30%	0.73	12.13	2.83	92	-1.4%	-42.7%	0.37	3.70	6.0%	2.5%	0.187	0.097	0.21%
United Real Estate	0.077	0.000	0.00%	0.48	240.63	0.00	83	-0.9%	2.1%	0.00	0.00	0.2%	-0.1%	0.121	0.064	0.18%
First Dubai for Real Estate Development	0.045	-0.003	-5.26%	0.44	30.20	0.00	33	-2.0%	-57.2%	0.07	1.52	1.5%	1.2%	0.120	0.044	0.07%
Al Mazaya Holding	0.045	-0.001	-1.75%	0.46	40.73	0.00	28	-4.7%	-41.4%	0.06	1.25	1.1%	0.6%	0.089	0.043	0.06%
Ajial Real Estate Entertainment	0.282	0.000	0.00%	0.42	17.40	1.77	55	2.5%	-7.2%	0.00	0.00	2.4%	2.0%	0.345	0.260	0.12%
Injazzat Real Estate Development	0.077	-0.004	-4.61%	0.46	6.51	6.23	26	-8.8%	-23.4%	0.02	0.25	7.0%	3.6%	0.114	0.070	0.06%
Munshaat Real Estate Projects	0.064	-0.003	-4.93%	1.97	12.04	0.00	21	-9.0%	-10.9%	0.00	0.00	17.4%	1.5%	0.081	0.052	0.05%
Aayan Real Estate	0.062	0.000	-0.16%	0.44	60.00	0.00	26	1.8%	-29.5%	0.02	0.27	0.7%	1.4%	0.105	0.056	0.06%
Al Argan International Real Estate	0.088	0.000	0.00%	0.29	32.05	0.00	22	15.1%	-25.2%	0.00	0.06	0.9%	0.3%	0.144	0.073	0.05%
Al-Enmaa Real Estate	0.065	0.001	2.20%	0.71	NM	0.00	29	-4.4%	-12.9%	0.02	0.24	-5.9%	NM	0.091	0.056	0.07%
Arkan Al Kuwait Real Estate	0.125	0.000	0.00%	0.88	12.18	4.80	31	2.5%	0.8%	0.00	0.00	7.4%	2.3%	0.152	0.113	0.07%
Kuwait Business Town Real Estate	0.051	0.000	-0.77%	0.64	14.29	0.00	30	3.2%	-37.0%	0.07	1.51	3.8%	2.8%	0.100	0.046	0.07%
Dalqan Real Estate	0.215	-0.004	-1.83%	1.93	199.07	0.00	13	0.5%	-0.9%	0.03	0.16	1.0%	1.0%	0.282	0.195	0.03%
Sokouk Holding	0.024	-0.001	-4.31%	0.57	NM	0.00	14	-9.3%	-25.2%	0.00	0.03	-2.9%	-1.7%	0.038	0.020	0.03%
Tijara and Realestate Investment	0.048	0.000	0.00%	0.43	7.27	6.32	18	0.0%	-22.3%	0.04	0.81	6.0%	3.2%	0.089	0.044	0.04%
Al-Arabiya Real Estate	0.034	0.000	-0.30%	0.40	NM	0.00	17	10.5%	-19.8%	0.00	0.04	-23.1%	-7.3%	0.052	0.026	0.04%
Aqar Real Estate Investments	0.059	0.005	9.43%	0.49	18.91	6.16	14	0.5%	-24.9%	0.00	0.00	2.6%	2.1%	0.098	0.052	0.03%
Mashaer Holding	0.055	0.000	0.00%	0.65	NM	0.00	10	2.8%	-21.7%	0.00	0.00	-6.5%	-3.2%	0.086	0.050	0.02%
Dar Al Thuraya Real Estate	0.170	0.000	0.00%	1.47	25.07	0.00	25	0.0%	61.9%	0.00	0.00	6.0%	5.3%	0.172	0.092	0.06%
Osos Holding Group	0.102	-0.001	-0.97%	0.89	8.12	9.71	11	5.2%	-2.9%	0.01	0.09	11.2%	7.1%	0.147	0.094	0.02%
Al Massaleh Real Estate	0.041	0.000	0.00%	0.68	NM	0.00	10	-1.4%	-21.3%	0.00	0.00	-15.4%	-3.2%	0.060	0.036	0.02%
Kuwait Remal Real Estate	0.011	-0.002	-12.80%	1.40	NM	0.00	3	-4.4%	-42.9%	0.00	0.19	-110.3%	-12.4%	0.024	0.010	0.01%
Kuwait Real Estate Holding	0.036	-0.001	-1.91%	0.67	13.04	0.00	7	-2.7%	-31.8%	0.00	0.00	5.1%	1.7%	0.059	0.032	0.02%
Taameer Real Estate Investment	0.020	0.000	-0.50%	0.32	NM	0.00	4	-3.4%	-52.1%	0.00	0.00	-6.5%	-4.9%	0.054	0.018	0.01%
Sanam Real Estate	0.059	-0.003	-4.98%	0.78	26.43	0.00	7	-0.5%	-25.0%	0.00	0.00	2.9%	2.8%	0.100	0.053	0.02%
Mena Real Estate	0.030	-0.002	-5.00%	0.27	NM	0.00	4	-7.6%	-39.2%	0.01	0.28	-6.8%	-5.4%	0.105	0.030	0.01%
Al Masaken International Real Estate Developmen	0.030	0.002	5.26%	0.48	NM	0.00	3	6.4%	-31.7%	0.00	0.00	-1.1%	-0.4%	0.069	0.028	0.01%
Real Estate Trade Centers	0.049	-0.001	-1.01%	0.27	20.50	0.00	7	-13.9%	-30.0%	0.00	0.01	1.3%	1.1%	0.123	0.043	0.02%
Land United Real Estate	0.068	0.000	0.00%	0.60	NM	0.00	10	0.0%	-27.6%	0.00	0.00	-4.8%	-1.5%	0.144	0.052	0.02%
Total Real Estate - 34 Companies							2,488			2.71	17.51					5.56%

DAILY MARKET COVERAGE REPORT

NIC MENA SECURITIES - RESEARCH AND STUDIES DEP



	Close (KD)	Day Δ	Day % Δ	PBV(X)	PE(X)	DY%	Mn KD	MTD(%)	YTD (%)	Value (Mn KD)	(Mn Shrs)	(%)	(%)	High	Low	%
Automated Systems	0.078	-0.001	-1.27%	0.69	NM	0.00	8	-3.7%	-17.0%	0.00	0.01	-3.4%	-3.0%	0.116	0.074	0.02%
Total Technology - 1 Companies				0.69	NM	0.0%	8			0.00	0.01	-3.40%	-2.96%			0.02%

Telecom	Price			Valuation Multiples			MKT Cap	Price Performance		Trading Indicators		ROE	ROA	52 Week (KD)		MKT Cap
Company	Close (KD)	Day Δ	Day % Δ	PBV(X)	PE(X)	DY%	Mn KD	MTD(%)	YTD (%)	Value (Mn KD)	(Mn Shrs)	(%)	(%)	High	Low	%
Mobile Telecommunications	0.585	-0.005	-0.85%	2.13	13.83	5.59	2,531	0.0%	-1.7%	2.32	3.96	15.6%	4.3%	0.698	0.564	5.65%
Kuwait Telecommunications	0.552	-0.009	-1.60%	2.48	12.70	5.35	551	-0.4%	29.1%	0.07	0.13	20.1%	10.9%	1.189	0.418	1.23%
National Mobile Telecommunications	0.890	-0.083	-8.53%	0.85	13.48	3.60	446	-3.3%	42.6%	0.02	0.02	6.2%	3.6%	1.280	0.615	1.00%
AAN Digital Services	0.016	0.000	0.00%	0.60	NM	0.00	14	0.0%	-2.4%	0.00	0.00	NM	NM	0.020	0.015	0.03%
Hayat Communications	0.061	0.003	4.44%	0.49	NM	0.00	5	-1.3%	-42.3%	0.00	0.01	-0.7%	-0.3%	0.124	0.052	0.01%
Telecom - 5 Companies							3,548			2.41	4.12					7.93%

Utilities	Price			Valuation Multiples			MKT Cap	Price Performance		Trading Indicators		ROE	ROA	52 Week (KD)		MKT Cap
Company	Close (KD)	Day Δ	Day % Δ	PBV(X)	PE(X)	DY%	Mn KD	MTD(%)	YTD (%)	Value (Mn KD)	(Mn Shrs)	(%)	(%)	High	Low	%
Shamal Az-Zour Al-Oula Power & Water	0.190	-0.003	-1.55%	2.14	14.55	9.33	209	-2.6%	-16.7%	0.06	0.30	19.1%	2.9%	0.247	0.189	0.47%
Total Utilities - 1 Companies							209			0.06	0.30					0.47%

Total Market 157 Companies				1.99	30.47	4.01	44,768			78.11	166.99					100%
-----------------------------------	--	--	--	-------------	--------------	-------------	---------------	--	--	--------------	---------------	--	--	--	--	-------------

End of Report

The information contained in this document is proprietary to NIC and is for use only by the persons to whom it is issued. This document is confidential and may not be distributed either in part or in whole without the express agreement of NIC. It is intended solely for the use of the individual or entity to whom it is addressed and others authorized to receive it.

Note : ROE and ROA is calculated based on LFY net profit & shareholders' equity and LFY Operating Profits & Total Assets

Sources : National Investments Company Research and Studies Departments, Boursa, Refinitiv.



شركة الاستثمار الوطنية
NATIONAL INVESTMENTS COMPANY

Sharq, Al Mutanabi Street, Khaleejia Tower | P.O. Box 25667, Safat 13117, Kuwait

T.: +965 2226 6666 | Fax: +965 2226 6793 | www.nic.com.kw